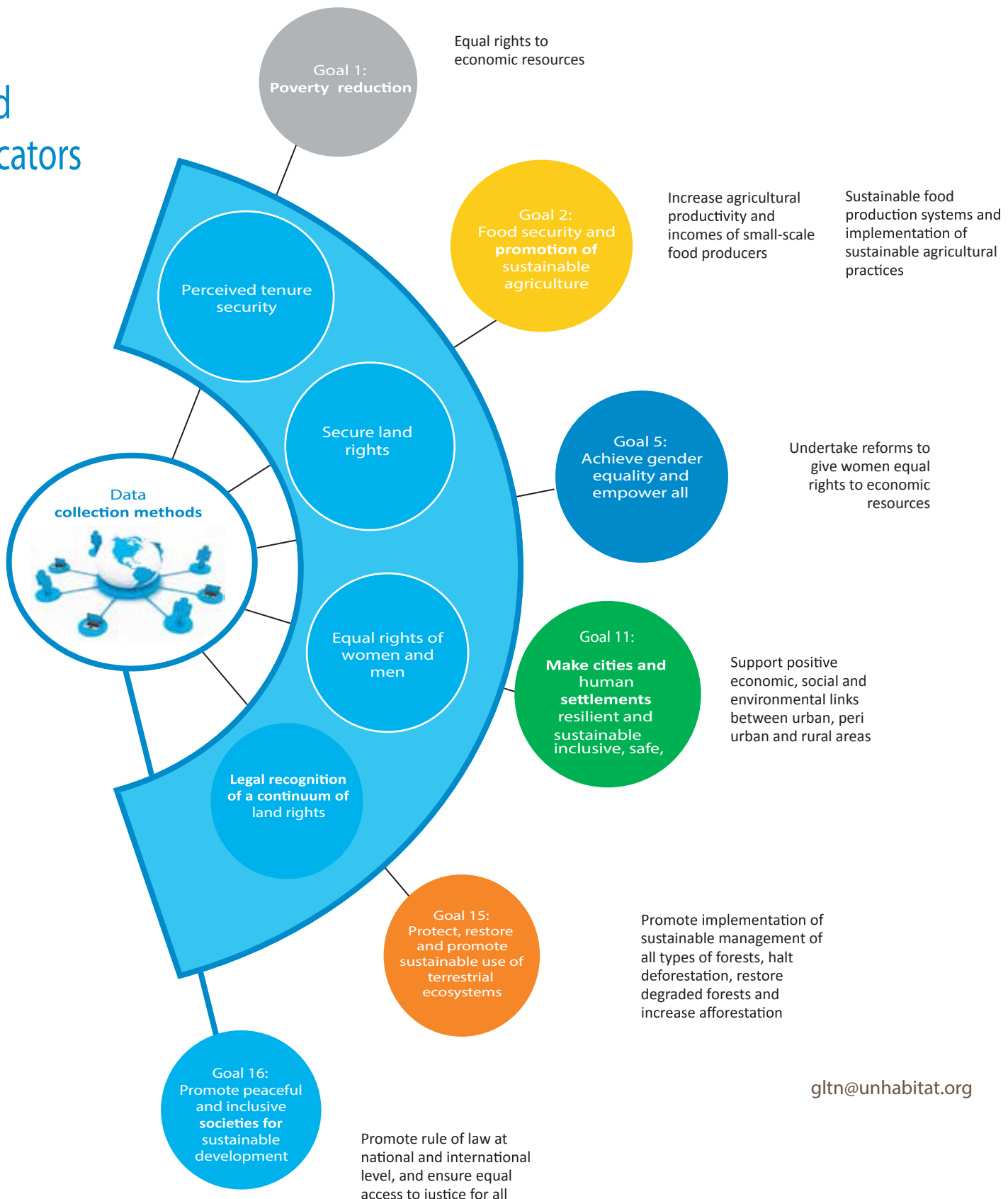


## LAND INDICATORS FOR GLOBALLY COMPARABLE DATA

### Land indicators



### LAND TENURE SECURITY

#### Documented land rights

- Percentage of women and men with *legally recognized documentation or evidence of secure rights to land*

#### Perceived tenure security

- Percentage of women and men who perceive their rights to land are protected against *dispossession or eviction*

#### Tenure security under a plurality of tenure regimes

- *Level of legal recognition and protection of land rights and uses derived through a plurality of tenure regimes*

#### Equal rights of women

- Level to which women and men have equal rights to land, including rights to use, control, own, inherit and transact these rights

#### Indigenous land rights

- *Proportion of indigenous and community groups with claims to land, and percentage of land areas claimed and utilized by them that have legally recognized documentation or evidence of secure rights to land*

### LAND CONFLICTS & DISPUTES

- Percentage of women and men, Indigenous Peoples and local communities who have experienced land, housing or property disputes or conflict in the past X years

#### Availability of dispute-resolution mechanisms

- Percentage of women and men, indigenous and local communities that have access to effective dispute-resolution mechanisms

#### Land dispute resolution effectiveness

- Percentage of women and men, indigenous and local communities who reported a conflict or dispute in the past X years that have had the conflict or dispute resolved

### LAND ADMINISTRATION SERVICES



#### Land administration efficiency

- *Range of times and costs to conduct land transaction*

#### Transparency of land information

- *Level to which land information is available for public access*

#### Land administration availability

- *Level to which all users, including women and vulnerable groups, have equal access to land administration services*

#### Mobilization of land-based taxes

- *Government tax derived from land-based sources as a percentage of total government revenue*

#### Land area mapped

- *Proportion of national land areas with rights holders identified that is incorporated into cadastral maps / land information systems*

### SUSTAINABLE LAND USE



#### Aggregate national changes in land-use sustainability

Changes in the geographical extent of sustainable land use, measured by

- i) land cover/land-use change;
- ii) *land productivity change*; and
- iii) soil organic carbon change

#### Progress in sustainable land-use planning

*Proportions of rural and urban administrative districts or units in which land use change and land development are governed by sustainable land-use plans that take account of the rights and interests of the local land users and land owners*