



Land and Poverty Conference 2016

Scaling up Responsible Land Governance

14-18 March, 2016 | Washington, DC

Enhancing Tenure Security Of Customary Land And Natural Resources In Karamoja Region Through Participatory community Mapping

Emmanuel Adiba

emmanuel.adiiba@ulaug.org, adiiba@Hotmail.com,
www.ulaug.org

Edmond M. Owor: Uganda Land Alliance, Ronald Mwandeje: Arrow
Research World, John Mwebe: International Accountability Project.
Samuel Mabikke, Lowie Rosales-Kawasaki, Danilo Antonio: UNHABITAT



FACILITATED BY:
UNHABITAT
FOR A BETTER URBAN FUTURE



PRESENTATION OUTLINE

- ❖ Introduction and Background
- ❖ Uganda Land Alliance's intervention and methodology
- ❖ Results, Way forward and Conclusion

INTRODUCTION

❖ Community participatory mapping

To bring community members, civil society, local governments and the central government together to better understand the places in which communities live

❖ Land Tenure.

80% of the Land In Uganda is held under customary tenure, 13% of the land demarcated in Karamoja Region (Napak) is owned by the women out of 136 parcels.

❖ Natural resources.

COMMUNITY PARTICIPATORY MAPPING IN NAPAK.

- ❖ Sensitisation of the community on mapping, land rights and Natural resource management.
- ❖ Sketching of the native land scale on paper
- ❖ Training on the use of modern tools: Global Positioning Systems
- ❖ Actual mapping with the community

INTERVENTION AND METHODOLOGY



NATURAL RESOURCES FOUND IN THE









Community Guide

Getting a Fair Deal from Companies and Investors

The Sustainable Development Institute (SDI) & Namati

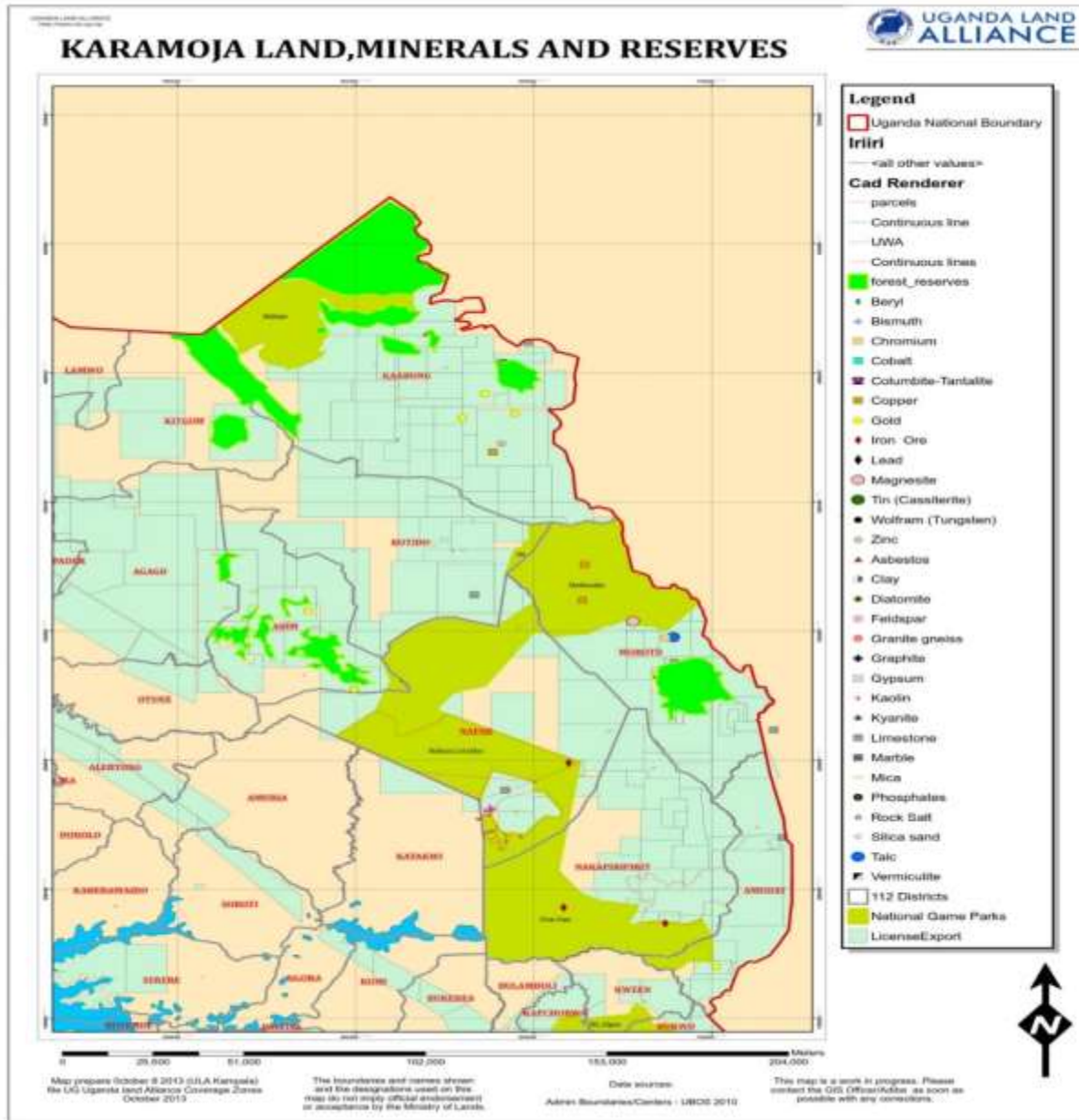
2011 Liberia

NAMATI

Collected from water & land (consumed & sold)	Units	Unit Cost	Use per day	Cost per day	Cost per week (x7)	Cost per month (x4)	Cost per year (x12)
 FIREWOOD							
 WATER							
 BUSH MEAT							
 FISH							
 BUSH PEPPER							
 HERBAL MEDICINE							



A MAP OF NATURAL RESOURCES FOUND IN KARAMOJA REGION



• WHY PARTICIPATORY COMMUNITY MAPPING

- ❖ Territorial planning and natural resource management
- ❖ Securing secondary rights to land
- ❖ Enhancing local governance structures
- ❖ Communal Land Associations

ROLES OF STAKE HOLDERS

- ❖ The community (Women, men, children and marginalized group)
- ❖ Local leaders
- ❖ Other Actors in the Districts. NGOs/CBOs and cultural leaders
- ❖ Uganda wildlife Authority
- ❖ National Forest Authority

RESULTS

- ❖ Registration of Land rights.
- ❖ Communal Land Associations represent communities (<http://www.landcoalition.org/en/bestpractice/communal-land-associations-claim-compensations-investments-their-territories>)
- ❖ Increased demand for Participatory community mapping.
- ❖ Reduction in the Land disputes
- ❖ Improved information exchange.

LESSONS LEARNT

- ❖ . Ascertainment of land rights through Participatory Community mapping will make Communities feel more secure on land.
- ❖ Sustainable land use and management
- ❖ Increased demand for Royalties
- ❖

WAY FORWARD

- ❖ Government intervention.
- ❖ Discussions on the degazettement of land in Karamoja.
- ❖ Community education and empowerment.

CONCLUSION

- Uganda land Alliance has adapted to using innovative technologies such as Social Tenure Domain model (STDM) Open source such as Quantum GIS and Open Street Mapping (OSM) for the mapping process and this will contribute to the thematic area: Enhancing tenure security for customary and common lands and natural resources (including water rights) formalizing and scaling of participatory land use mapping; inclusive organizational models and transferability of rights

THANK YOU, ASANTE, MERCI FOR LISTENING

FOR MORE INFORMATION, VISIT

www.ulaug.org

